

Introducing

Two New Interactive Features for
CTTC Research Website

Air Travel Analyzer, Single Origin

Air Travel Analyzer, Multiple Origins

Demo.....

Air Travel Analyzer, Single Origin

U.S. Domestic Air Visitors to CALIFORNIA Destinations

Select Origin Metro Area

Albuquerque

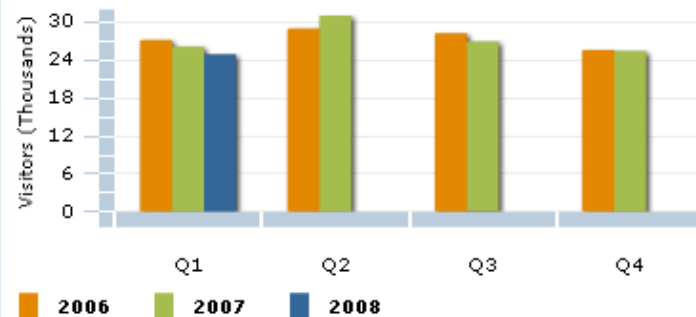
Select Destination Metro Area

Los Angeles

Bar Chart Line Chart

Save as JPEG /Print

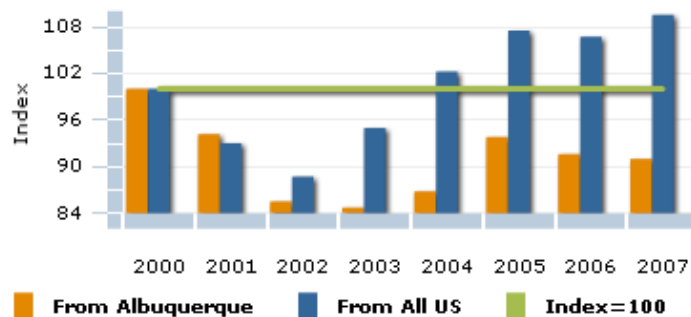
Air Visitors From Albuquerque To Los Angeles



Bar Chart Line Chart

Save as JPEG /Print

Air Visitors To Los Angeles, Index Year 2000 = 100



Albuquerque to Los Angeles (Thousands)

Year	Q1	Q2	Q3	Q4	Annual
2000	27.5	33.5	30.9	28.3	120.1
2001	27.1	32.8	29.3	23.9	113.1
2002	23.6	26.9	26.6	25.6	102.7
2003	25.9	25.9	25.5	24.5	101.7
2004	24.8	27.2	26.9	25.3	104.2
2005	25.9	30.5	29.9	26.3	112.6
2006	27.2	29.0	28.2	25.6	110.0
2007	26.1	31.0	26.9	25.4	109.3
2008	24.9	0.0	0.0	0.0	24.9

Average Annual Change (%)

Save Data as Excel

	Q1	Q2	Q3	Q4	Annual
2000-2007	-0.7%	-1.0%	-1.7%	-1.3%	-1.2%
2007-2008	-4.6%	N/A	N/A	N/A	N/A

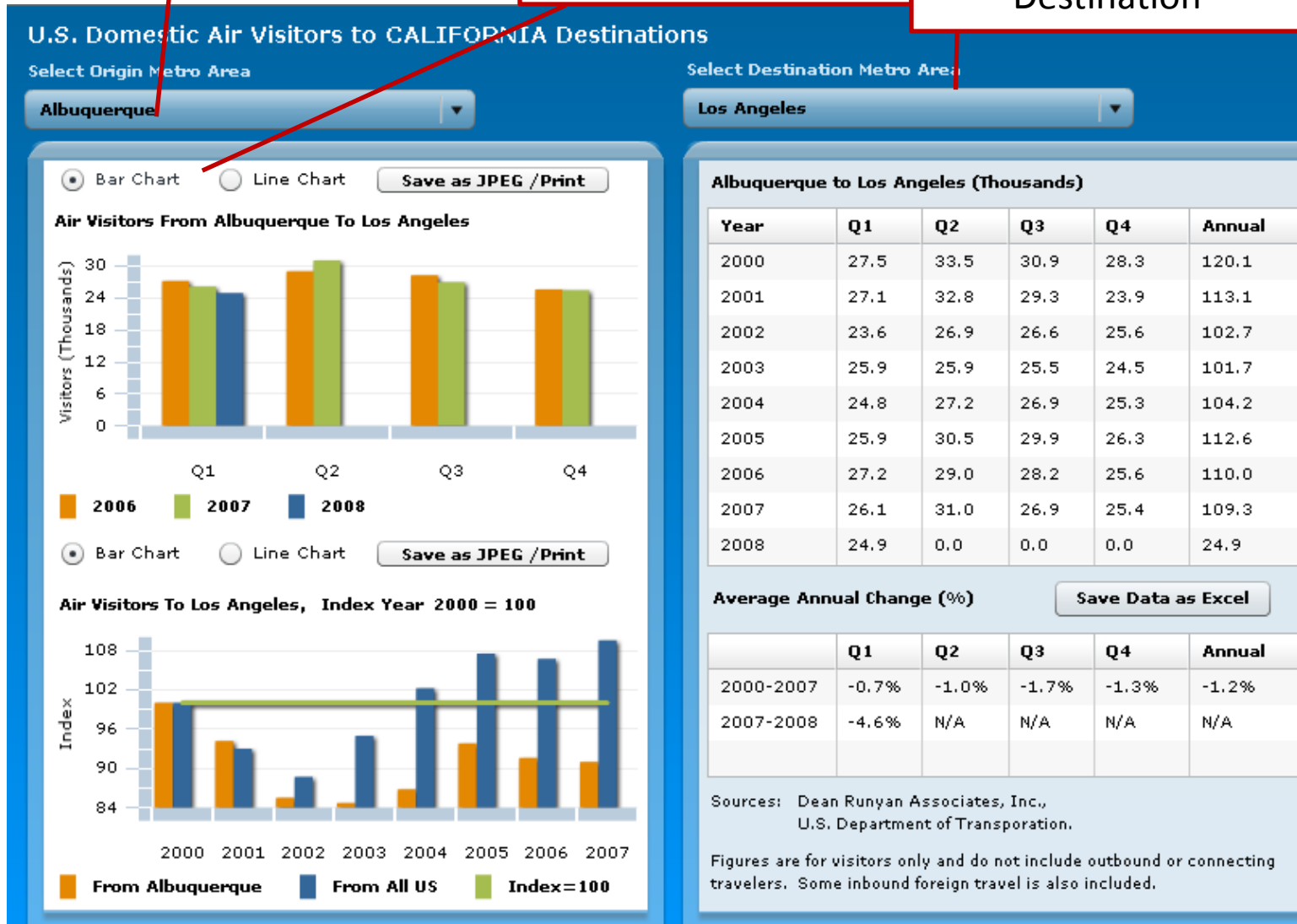
Sources: Dean Runyan Associates, Inc.,
U.S. Department of Transportation.

Figures are for visitors only and do not include outbound or connecting travelers. Some inbound foreign travel is also included.

1. Select Origin Market

2. Select Chart Types

3. Select California Destination



Air Travel Analyzer, Multiple Origins

Air Visitors from Multiple Origins to One Destination

Select Destination:

Sacramento

Select Time Period:

Annual Q1 Q2 Q3 Q4

Select Data Range:

2000 2001 2002 2003 2004 2005 2006 2007 2008



Display All Origins

Origin	2004	2007	Annual Change
Seattle	93.0	97.1	1.5%
Spokane	16.8	17.5	1.3%
St. Louis	15.8	15.8	-0.1%
Tampa	9.7	9.9	0.6%
Tucson	9.7	9.3	-1.5%
Tulsa	7.4	7.0	-1.9%
Virg. Beach	6.0	6.9	4.6%

Display Selected Origins (Drag and Drop from List)

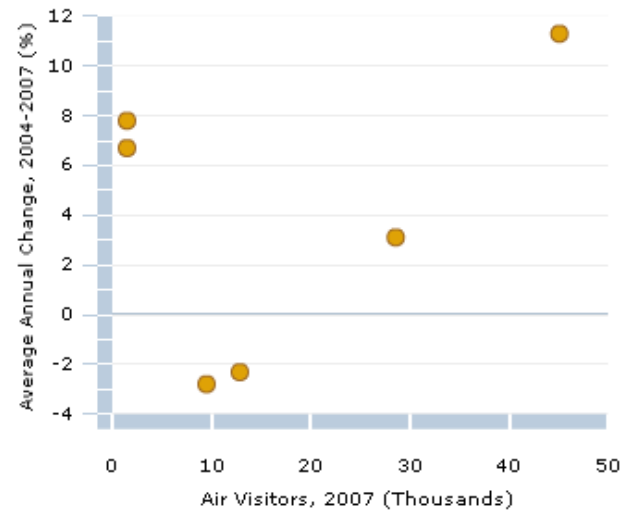
Origin	2004	2007	Annual Change
Amarillo	1.2	1.5	7.8%
San Antonio	10.4	9.5	-2.8%
Austin	13.8	12.9	-2.3%
Dallas/FW	32.7	45.1	11.3%
Lubbock	1.2	1.5	6.7%

You selected: 6 Origin(s)

Reset

Save as Excel

From Metro Origins to Sacramento (Annual)



Save Chart as JPEG/Print

1. Select Destination

2. Select Time Period

3. Select Data Range

Air Visitors from Multiple Origins to One Destination

Select Destination:

Sacramento

Select Time Period:

Annual Q1 Q2 Q3 Q4

Select Data Range:

2000 2001 2002 2003 2004 2005 2006 2007 2008



Display All Origins

Origin	2004	2007	Annual Change
Seattle	93.0	97.1	1.5%
Spokane	16.8	17.5	1.3%
St. Louis	15.8	15.8	-0.1%

4. Drag and Drop Selected Origin Markets

Display Selected Origins (Drag and Drop from List)

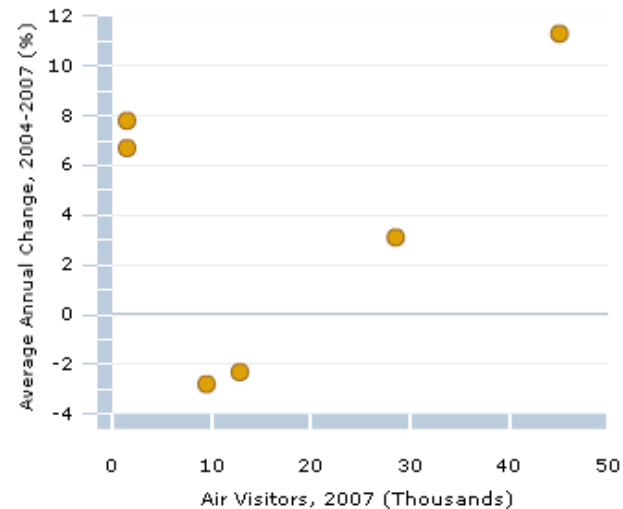
Origin	2004	2007	Annual Change
Amarillo	1.2	1.5	7.8%
San Antonio	10.4	9.5	-2.8%
Austin	13.8	12.9	-2.3%
Dallas/FW	32.7	45.1	11.3%
Lubbock	1.2	1.5	6.7%

You selected: 6 Origin(s)

Reset

Save as Excel

From Metro Origins to Sacramento (Annual)



Save Chart as JPEG/Print

1. Sacramento

2. Annual

3. 2004 - 2007

Example #1

Origins from Multiple Origins to One Destination

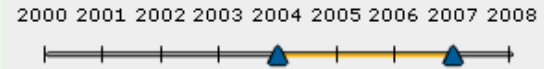
Select Destination:

Sacramento

Select Time Period:

Annual Q1 Q2 Q3 Q4

Select Data Range:



Display All Origins

Origin	2004	2007	Annual Change
Seattle	93.0	97.1	1.5%
Spokane	16.8	17.5	1.3%
St. Louis	15.8	15.8	-0.1%

4. Amarillo, San Antonio, Austin, Dallas/FW, Lubbock, Houston

Display Selected Origins (Drag and Drop from List)

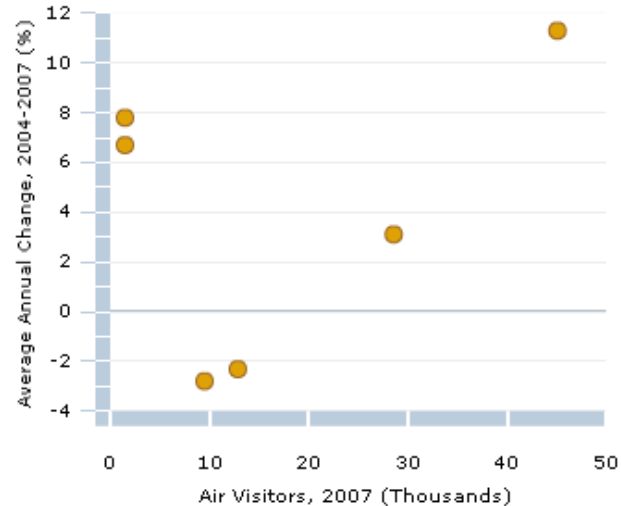
Origin	2004	2007	Annual Change
Amarillo	1.2	1.5	7.8%
San Antonio	10.4	9.5	-2.8%
Austin	13.8	12.9	-2.3%
Dallas/FW	32.7	45.1	11.3%
Lubbock	1.2	1.5	6.7%

You selected: 6 Origin(s)

Reset

Save as Excel

From Metro Origins to Sacramento (Annual)



Save Chart as JPEG/Print

5. Result: Graph shows **percent change** from the selected origin markets, and **size** of the markets.

Air Visitors from Multiple Origins to One Destination

Select Destination: Sacramento

Select Time Period: Annual Q1 Q2 Q3 Q4

Select Data Range: 2000 2001 2002 2003 2004 2005 2006 2007 2008

Display All Origins

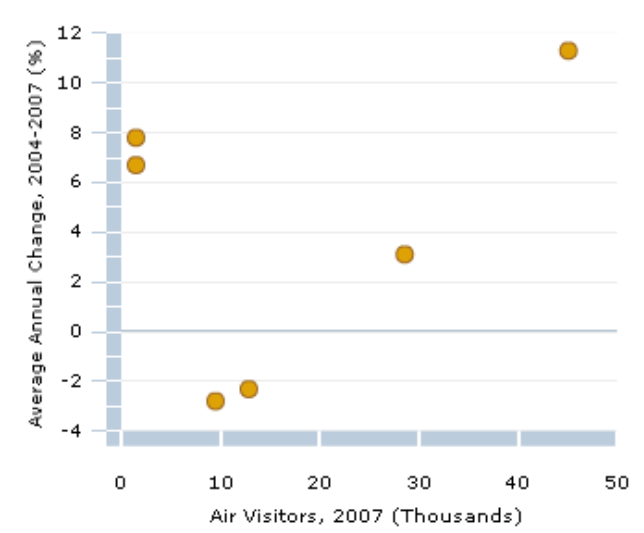
Origin	2004	2007	Annual Change
Seattle	93.0	97.1	1.5%
Spokane	16.8	17.5	1.3%
St. Louis	15.8	15.8	-0.1%
Tampa	9.7	9.9	0.6%
Tucson	9.7	9.3	-1.5%
Tulsa	7.4	7.0	-1.9%
Virg. Beach	6.0	6.9	4.6%

Display Selected Origins (Drag and Drop from List)

Origin	2004	2007	Annual Change
Amarillo	1.2	1.5	7.8%
San Antonio	10.4	9.5	-2.8%
Austin	13.8	12.9	-2.3%
Dallas/FW	32.7	45.1	11.3%
Lubbock	1.2	1.5	6.7%

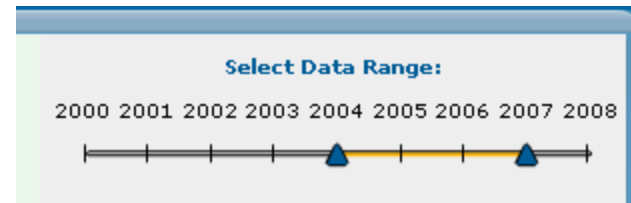
You selected: 6 Origin(s)

From Metro Origins to Sacramento (Annual)



We find:

- Between 2004 and 2007, air travel from Texas to Sacramento increased from four markets, including DFW, and declined in two markets.

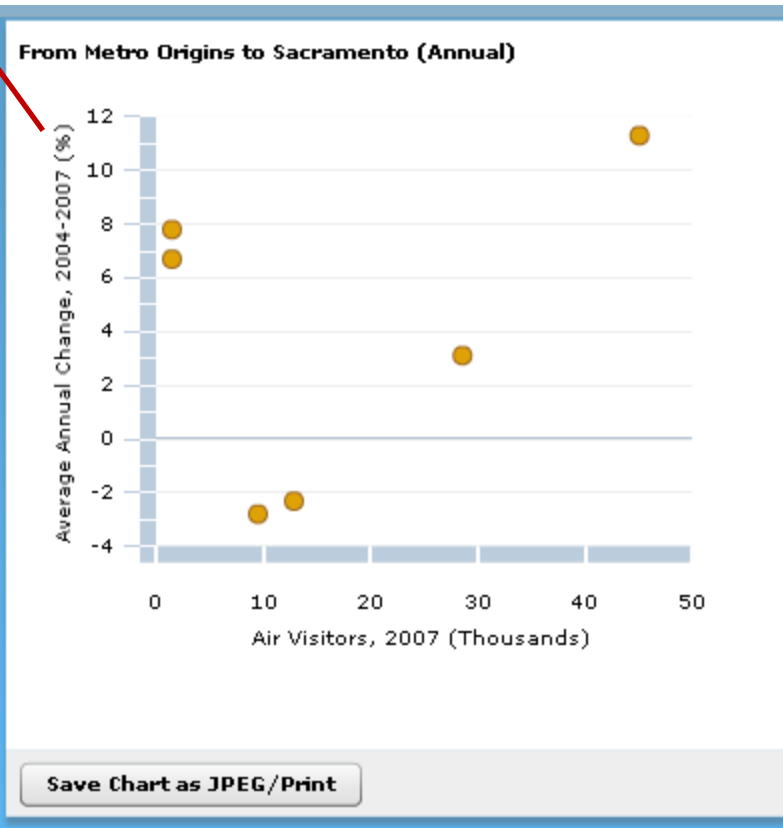


Origin	2004	2007	Annual Change
Amarillo	1.2	1.5	7.8%
San Antonio	10.4	9.5	-2.8%
Austin	13.8	12.9	-2.3%
Dallas/FW	32.7	45.1	11.3%
Lubbock	1.2	1.5	6.7%

You selected: 6 Origin(s)

Reset

Save as Excel



1. San Francisco Bay Area

2. First Quarter

3. 2002 - 2005

Example #2

Select Destination:

SF Bay Area

Select Time Period:

Annual Q1 Q2 Q3 Q4

Select Data Range:

2000 2001 2002 2003 2004 2005 2006 2007 2008

Display All Origins

Origin	2002Q1	2005Q1	Annual Change
Albuquerque	11.9	13.0	3.2%
Amarillo	0.5	0.7	10.8%
Anchorage	3.4	3.6	2.5%

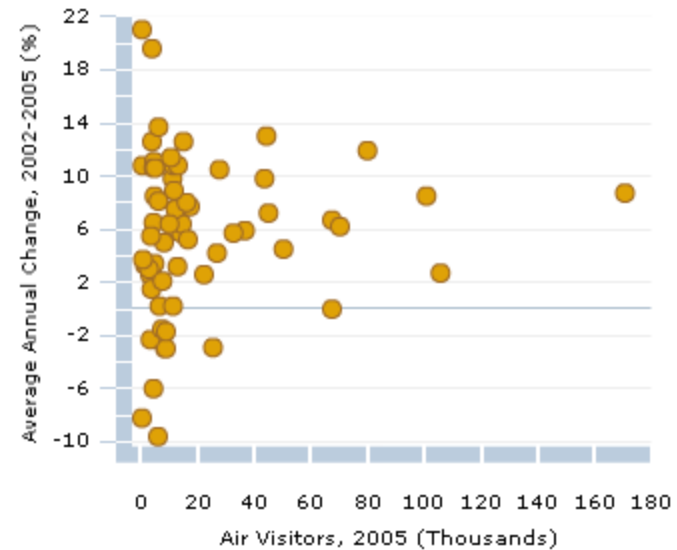
4. All Origins

Display Selected Origins (Drag and Drop from List)

Origin	2002Q1	2005Q1	Annual Change

Save as Excel

From Metro Origins to SF Bay Area (Q1)



Save Chart as JPEG/Print

Select Time Period:

Annual Q1 Q2 Q3 Q4

Select Data Range:

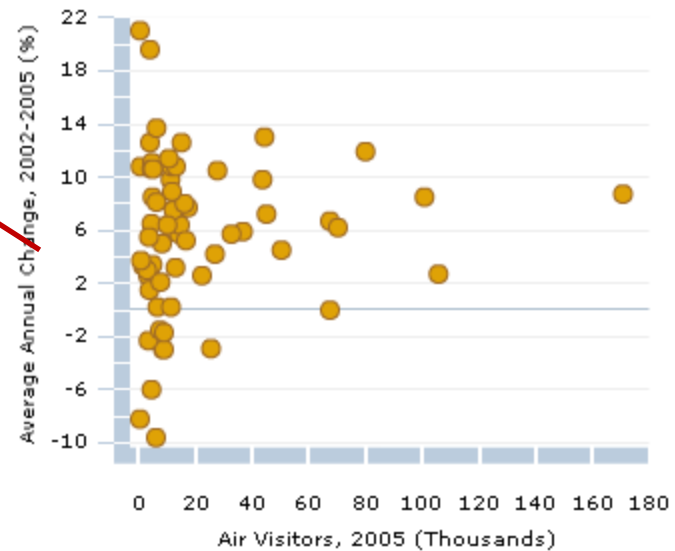
2000 2001 2002 2003 2004 2005 2006 2007 2008



We find:

- Between 2002 and 2005, first quarter air travel to the San Francisco Bay Area from nearly every domestic market showed gains.

From Metro Origins to SF Bay Area (Q1)



Save Chart as JPEG/Print

Then if the data range is changed to
2006 – 2008...

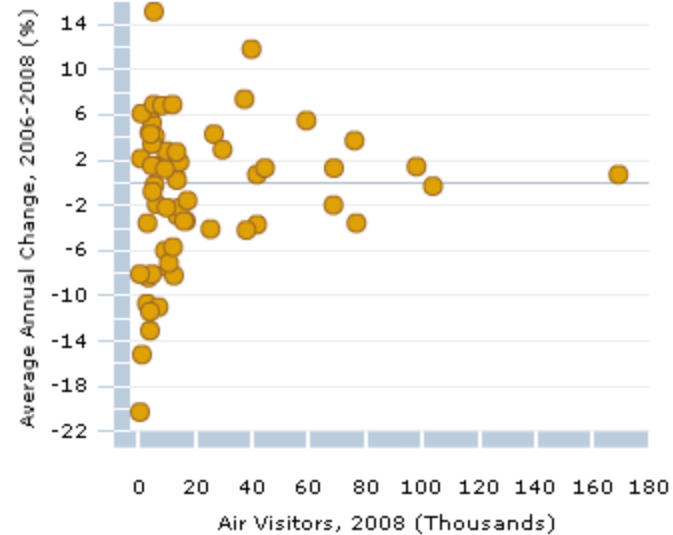
Example
#3

We find:

- Between 2006 and 2008, first quarter air travel to the San Francisco Bay Area declined from almost half of all domestic origin markets.



From Metro Origins to SF Bay Area (Q1)



Save Chart as JPEG/Print